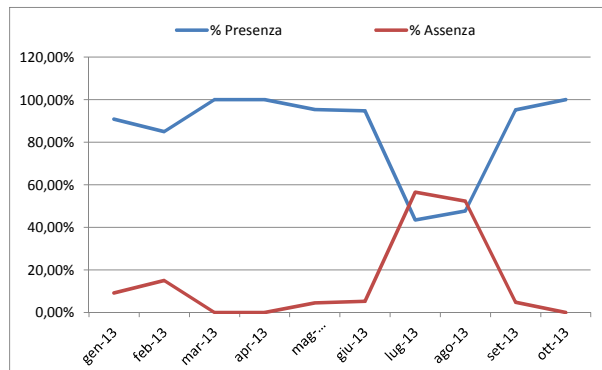


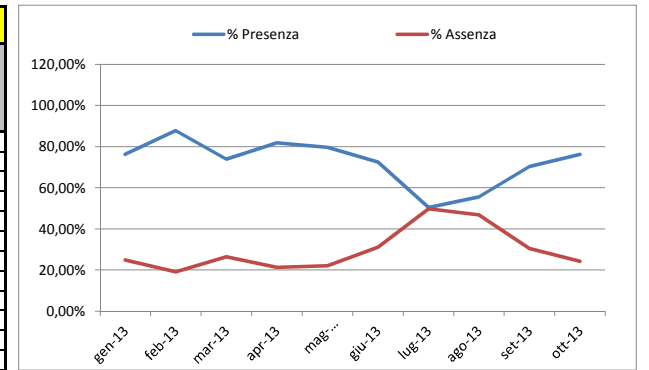


Comune di Poggioreale - Provincia di Napoli  
 Adempimenti di cui alla legge n. 69 del 18/06/2009 art. 21 comma 1  
 Dotazione organica approvata con delibera di GC n. 9 del 29/01/2013

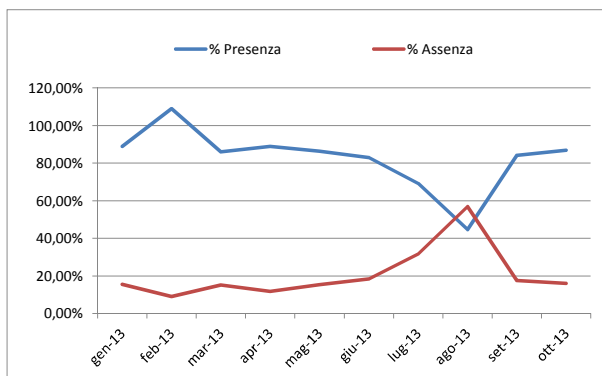
| SEGRETERIO GENERALE |                   |                          |                        |            |                     |           |
|---------------------|-------------------|--------------------------|------------------------|------------|---------------------|-----------|
| Mese                | Totale Dipendenti | Totale Giorni Lavorativi | Totale Giorni Presenza | % Presenza | Tot. Giorni Assenza | % Assenza |
| gen-13              | 1                 | 22                       | 20                     | 90,91%     | 2                   | 9,09%     |
| feb-13              | 1                 | 20                       | 17                     | 85,00%     | 3                   | 15,00%    |
| mar-13              | 1                 | 21                       | 21                     | 100,00%    | 0                   | 0,00%     |
| apr-13              | 1                 | 20                       | 20                     | 100,00%    | 0                   | 0,00%     |
| mag-13              | 1                 | 22                       | 21                     | 95,45%     | 1                   | 4,55%     |
| giu-13              | 1                 | 19                       | 18                     | 94,74%     | 1                   | 5,26%     |
| lug-13              | 1                 | 23                       | 10                     | 43,48%     | 13                  | 56,52%    |
| ago-13              | 1                 | 21                       | 10                     | 47,62%     | 11                  | 52,38%    |
| set-13              | 1                 | 21                       | 20                     | 95,24%     | 1                   | 4,76%     |
| ott-13              | 1                 | 23                       | 23                     | 100,00%    | 0                   | 0,00%     |
| nov-13              |                   |                          |                        |            |                     |           |
| dic-13              |                   |                          |                        |            |                     |           |



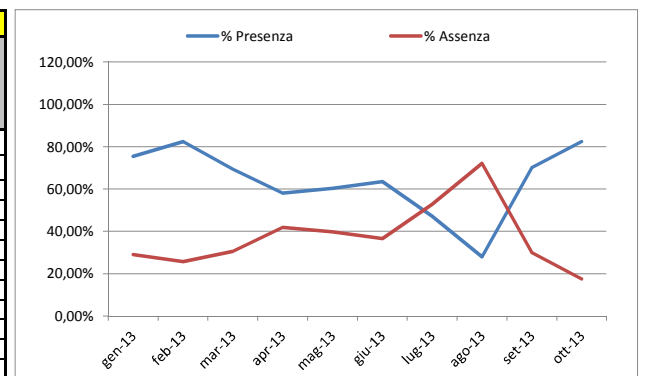
| SETTORE IV: Polizia Municipale |                   |                          |                        |            |                     |           |
|--------------------------------|-------------------|--------------------------|------------------------|------------|---------------------|-----------|
| Mese                           | Totale Dipendenti | Totale Giorni Lavorativi | Totale Giorni Presenza | % Presenza | Tot. Giorni Assenza | % Assenza |
| gen-13                         | 16                | 379                      | 289                    | 76,25%     | 94                  | 24,80%    |
| feb-13                         | 17                | 382                      | 335                    | 87,70%     | 73                  | 19,11%    |
| mar-13                         | 17                | 409                      | 302                    | 73,84%     | 108                 | 26,41%    |
| apr-13                         | 17                | 385                      | 315                    | 81,82%     | 82                  | 21,30%    |
| mag-13                         | 17                | 421                      | 335                    | 79,57%     | 93                  | 22,09%    |
| giu-13                         | 17                | 384                      | 278                    | 72,40%     | 119                 | 30,99%    |
| lug-13                         | 20                | 501                      | 252                    | 50,30%     | 249                 | 49,70%    |
| ago-13                         | 20                | 474                      | 263                    | 55,49%     | 222                 | 46,84%    |
| set-13                         | 20                | 464                      | 326                    | 70,26%     | 141                 | 30,39%    |
| ott-13                         | 20                | 496                      | 378                    | 76,21%     | 120                 | 24,19%    |
| nov-13                         |                   |                          |                        |            |                     |           |
| dic-13                         |                   |                          |                        |            |                     |           |



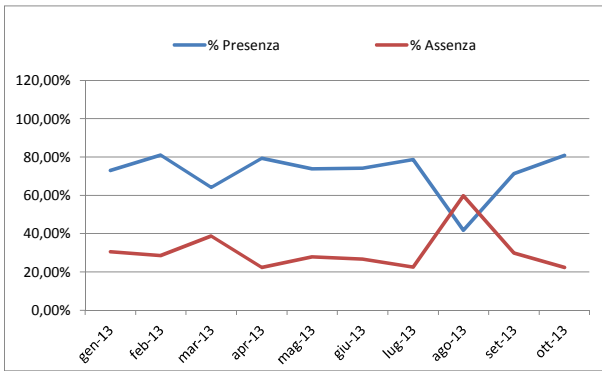
| SETTORE I: Affari Generali ed Istituzionali |                   |                          |                        |            |                     |           |
|---|-------------------|--------------------------|------------------------|------------|---------------------|-----------|
| Mese  | Totale Dipendenti | Totale Giorni Lavorativi | Totale Giorni Presenza | % Presenza | Tot. Giorni Assenza | % Assenza |
| gen-13                                      | 20                | 439                      | 390                    | 88,84%     | 68                  | 15,49%    |
| feb-13                                      | 19                | 377                      | 411                    | 109,02%    | 34                  | 9,02%     |
| mar-13                                      | 19                | 400                      | 344                    | 86,00%     | 61                  | 15,25%    |
| apr-13                                      | 19                | 380                      | 338                    | 88,95%     | 45                  | 11,84%    |
| mag-13                                      | 19                | 417                      | 360                    | 86,33%     | 64                  | 15,35%    |
| giu-13                                      | 19                | 358                      | 297                    | 82,96%     | 66                  | 18,44%    |
| lug-13                                      | 19                | 432                      | 299                    | 69,21%     | 137                 | 31,71%    |
| ago-13                                      | 19                | 395                      | 176                    | 44,56%     | 225                 | 56,96%    |
| set-13                                      | 19                | 392                      | 330                    | 84,18%     | 69                  | 17,60%    |
| ott-13                                      | 19                | 431                      | 374                    | 86,77%     | 69                  | 16,01%    |
| nov-13                                      |                   |                          |                        |            |                     |           |
| dic-13                                      |                   |                          |                        |            |                     |           |



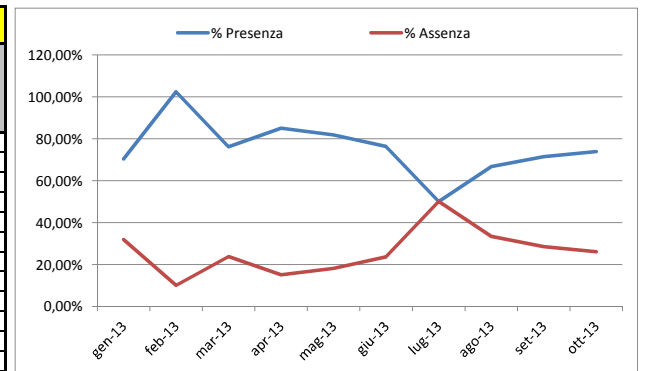
| SETTORE V: Affari Sociali - Culturali e Ricreativi |                   |                          |                        |            |                     |           |
|--|-------------------|--------------------------|------------------------|------------|---------------------|-----------|
| Mese   | Totale Dipendenti | Totale Giorni Lavorativi | Totale Giorni Presenza | % Presenza | Tot. Giorni Assenza | % Assenza |
| gen-13   | 7                 | 155                      | 117                    | 75,48%     | 45                  | 29,03%    |
| feb-13   | 7                 | 148                      | 122                    | 82,43%     | 38                  | 25,68%    |
| mar-13   | 7                 | 157                      | 109                    | 69,43%     | 48                  | 30,57%    |
| apr-13   | 7                 | 148                      | 86                     | 58,11%     | 62                  | 41,89%    |
| mag-13   | 6                 | 136                      | 82                     | 60,29%     | 54                  | 39,71%    |
| giu-13   | 6                 | 115                      | 73                     | 63,48%     | 42                  | 36,52%    |
| lug-13   | 7                 | 161                      | 76                     | 47,20%     | 85                  | 52,80%    |
| ago-13   | 7                 | 147                      | 41                     | 27,89%     | 106                 | 72,11%    |
| set-13   | 7                 | 147                      | 103                    | 70,07%     | 44                  | 29,93%    |
| ott-13   | 8                 | 171                      | 141                    | 82,46%     | 30                  | 17,54%    |
| nov-13   |                   |                          |                        |            |                     |           |
| dic-13   |                   |                          |                        |            |                     |           |



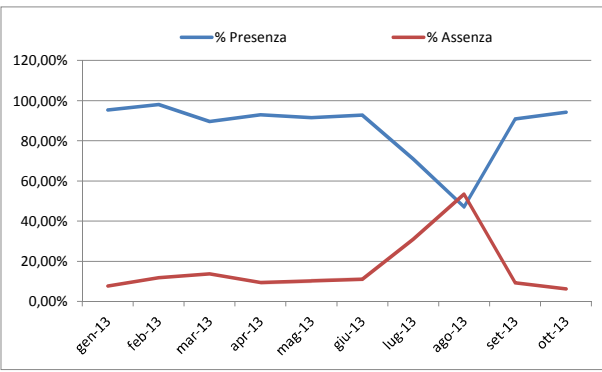
| SETTORE II: Ragioneria - Finanze Tributi ed Economato |                   |                          |                        |            |                     |           |
|---|-------------------|--------------------------|------------------------|------------|---------------------|-----------|
| Mese  | Totale Dipendenti | Totale Giorni Lavorativi | Totale Giorni Presenza | % Presenza | Tot. Giorni Assenza | % Assenza |
| gen-13  | 11                | 233                      | 170                    | 72,96%     | 71                  | 30,47%    |
| feb-13  | 12                | 232                      | 188                    | 81,03%     | 66                  | 28,45%    |
| mar-13  | 12                | 243                      | 156                    | 64,20%     | 94                  | 38,68%    |
| apr-13  | 12                | 232                      | 184                    | 79,31%     | 52                  | 22,41%    |
| mag-13  | 12                | 255                      | 188                    | 73,73%     | 71                  | 27,84%    |
| giu-13  | 12                | 221                      | 164                    | 74,21%     | 59                  | 26,70%    |
| lug-13  | 12                | 267                      | 210                    | 78,65%     | 60                  | 22,47%    |
| ago-13  | 12                | 244                      | 102                    | 41,80%     | 146                 | 59,84%    |
| set-13  | 12                | 244                      | 174                    | 71,31%     | 73                  | 29,92%    |
| ott-13  | 12                | 265                      | 214                    | 80,75%     | 59                  | 22,26%    |
| nov-13  |                   |                          |                        |            |                     |           |
| dic-13  |                   |                          |                        |            |                     |           |



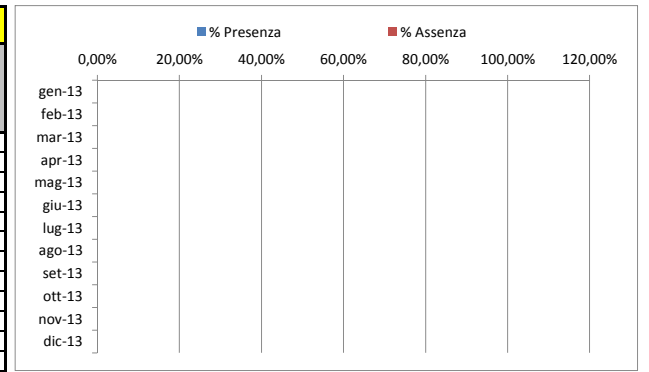
| SETTORE VI: Settore Attività Produttive ed Ecologia |                   |                          |                        |            |                     |           |
|---|-------------------|--------------------------|------------------------|------------|---------------------|-----------|
| Mese  | Totale Dipendenti | Totale Giorni Lavorativi | Totale Giorni Presenza | % Presenza | Tot. Giorni Assenza | % Assenza |
| gen-13  | 2                 | 44                       | 31                     | 70,45%     | 14                  | 31,82%    |
| feb-13  | 2                 | 40                       | 41                     | 102,50%    | 4                   | 10,00%    |
| mar-13  | 2                 | 42                       | 32                     | 76,19%     | 10                  | 23,81%    |
| apr-13  | 2                 | 40                       | 34                     | 85,00%     | 6                   | 15,00%    |
| mag-13  | 2                 | 44                       | 36                     | 81,82%     | 8                   | 18,18%    |
| giu-13  | 2                 | 38                       | 29                     | 76,32%     | 9                   | 23,68%    |
| lug-13  | 2                 | 46                       | 23                     | 50,00%     | 23                  | 50,00%    |
| ago-13  | 2                 | 42                       | 28                     | 66,67%     | 14                  | 33,33%    |
| set-13  | 2                 | 42                       | 30                     | 71,43%     | 12                  | 28,57%    |
| ott-13  | 2                 | 46                       | 34                     | 73,91%     | 12                  | 26,09%    |
| nov-13  |                   |                          |                        |            |                     |           |
| dic-13  |                   |                          |                        |            |                     |           |



| SETTORE III: LL.PP. - Urbanistica - Att.tà Man.ve - Sis. Inf. |                   |                          |                        |            |                     |           |
|---|-------------------|--------------------------|------------------------|------------|---------------------|-----------|
| Mese  | Totale Dipendenti | Totale Giorni Lavorativi | Totale Giorni Presenza | % Presenza | Tot. Giorni Assenza | % Assenza |
| gen-13  | 14                | 303                      | 289                    | 95,38%     | 23                  | 7,59%     |
| feb-13  | 13                | 256                      | 251                    | 98,05%     | 30                  | 11,72%    |
| mar-13  | 13                | 270                      | 242                    | 89,63%     | 37                  | 13,70%    |
| apr-13  | 13                | 256                      | 238                    | 92,97%     | 24                  | 9,38%     |
| mag-13  | 14                | 306                      | 280                    | 91,50%     | 31                  | 10,13%    |
| giu-13  | 14                | 262                      | 243                    | 92,75%     | 29                  | 11,07%    |
| lug-13  | 10                | 220                      | 156                    | 70,91%     | 68                  | 30,91%    |
| ago-13  | 10                | 206                      | 97                     | 47,09%     | 110                 | 53,40%    |
| set-13  | 10                | 207                      | 188                    | 90,82%     | 19                  | 9,18%     |
| ott-13  | 10                | 223                      | 210                    | 94,17%     | 14                  | 6,28%     |
| nov-13  |                   |                          |                        |            |                     |           |
| dic-13  |                   |                          |                        |            |                     |           |



| Totale |                   |                          |                        |            |                     |           |
|--------|-------------------|--------------------------|------------------------|------------|---------------------|-----------|
| Mese   | Totale Dipendenti | Totale Giorni Lavorativi | Totale Giorni Presenza | % Presenza | Tot. Giorni Assenza | % Assenza |
| gen-13 | 71                | 1.575                    | 1.306                  | 82,92%     | 317                 | 20,13%    |
| feb-13 | 71                | 1.455                    | 1.365                  | 93,81%     | 248                 | 17,04%    |
| mar-13 | 71                | 1.542                    | 1.206                  | 78,21%     | 358                 | 23,22%    |
| apr-13 | 71                | 1.461                    | 1.215                  | 83,16%     | 271                 | 18,55%    |
| mag-13 | 71                | 1.601                    | 1.302                  | 81,32%     | 322                 | 20,11%    |
| giu-13 | 71                | 1.397                    | 1.102                  | 78,88%     | 325                 | 23,26%    |
| lug-13 | 71                | 1.650                    | 1.026                  | 62,18%     | 635                 | 38,48%    |
| ago-13 | 71                | 1.529                    | 717                    | 46,89%     | 834                 | 54,55%    |
| set-13 | 71                | 1.517                    | 1.171                  | 77,19%     | 359                 | 23,67%    |
| ott-13 | 72                | 1.655                    | 1.374                  | 83,02%     | 304                 | 18,37%    |
| nov-13 | 0                 | 0                        | 0                      |            | 0                   |           |
| dic-13 | 0                 | 0                        | 0                      |            | 0                   |           |



| Totale |                   |                          |                        |            |                     |           |
|--------|-------------------|--------------------------|------------------------|------------|---------------------|-----------|
| Mese   | Totale Dipendenti | Totale Giorni Lavorativi | Totale Giorni Presenza | % Presenza | Tot. Giorni Assenza | % Assenza |
| gen-13 | 71                | 1.575                    | 1.306                  | 82,92%     | 317                 | 20,13%    |
| feb-13 | 71                | 1.455                    | 1.365                  | 93,81%     | 248                 | 17,04%    |
| mar-13 | 71                | 1.542                    | 1.206                  | 78,21%     | 358                 | 23,22%    |
| apr-13 | 71                | 1.461                    | 1.215                  | 83,16%     | 271                 | 18,55%    |
| mag-13 | 71                | 1.601                    | 1.302                  | 81,32%     | 322                 | 20,11%    |
| giu-13 | 71                | 1.397                    | 1.102                  | 78,88%     | 325                 | 23,26%    |
| lug-13 | 71                | 1.650                    | 1.026                  | 62,18%     | 635                 | 38,48%    |
| ago-13 | 71                | 1.529                    | 717                    | 46,89%     | 834                 | 54,55%    |
| set-13 | 71                | 1.517                    | 1.171                  | 77,19%     | 359                 | 23,67%    |
| ott-13 | 72                | 1.655                    | 1.374                  | 83,02%     | 304                 | 18,37%    |
| nov-13 | 0                 | 0                        | 0                      |            | 0                   |           |
| dic-13 | 0                 | 0                        | 0                      |            | 0                   |           |

