

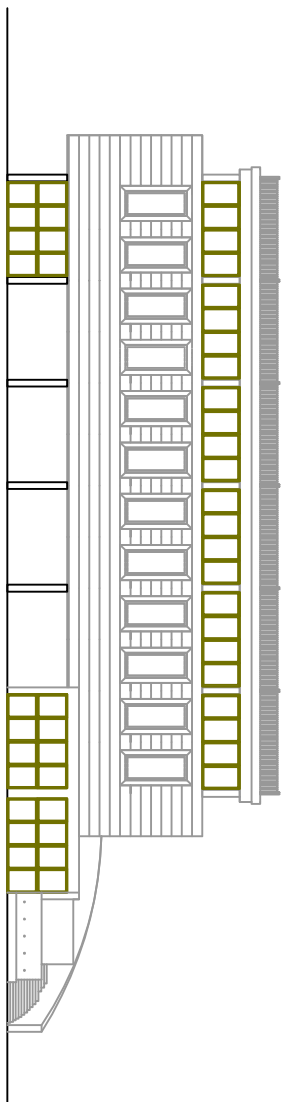


# RIQUALIFICAZIONE PERCORSO PARCO ARCHEO-FUVIALE

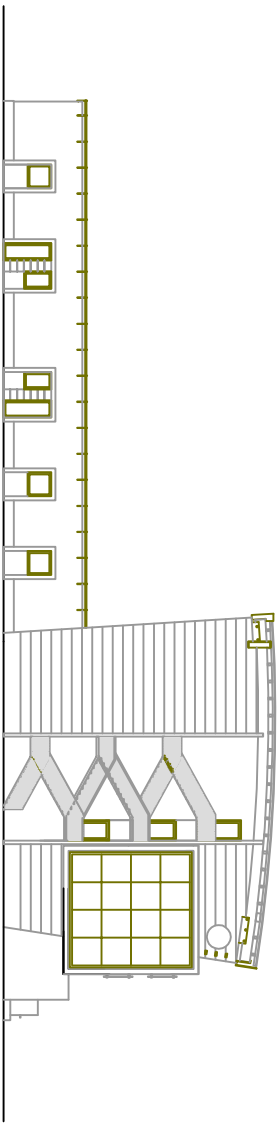
ARCHIT. GIUSEPPE OGLI BOBBO  
ARCHIT. GIUSEPPE OGLI BOBBO  
ARCHIT. GIUSEPPE ARBONIA  
ARCHIT. GIUSEPPE ARBONIA  
ARCHIT. ANTONINO M. FARRINELLI

Dimensione del sito: 10.000 mq

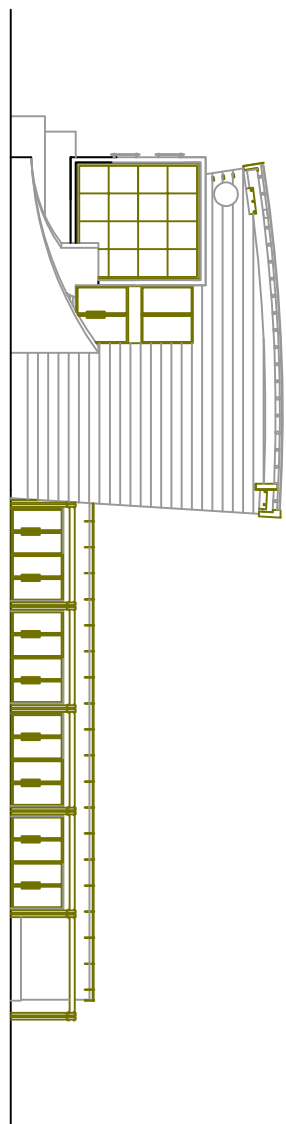
10.000 mq  
10.000 mq  
10.000 mq



PROSPETTO NORD  
SCALA 1/100



PROSPETTO EST  
SCALA 1/100



PROSPETTO OVEST  
SCALA 1/100